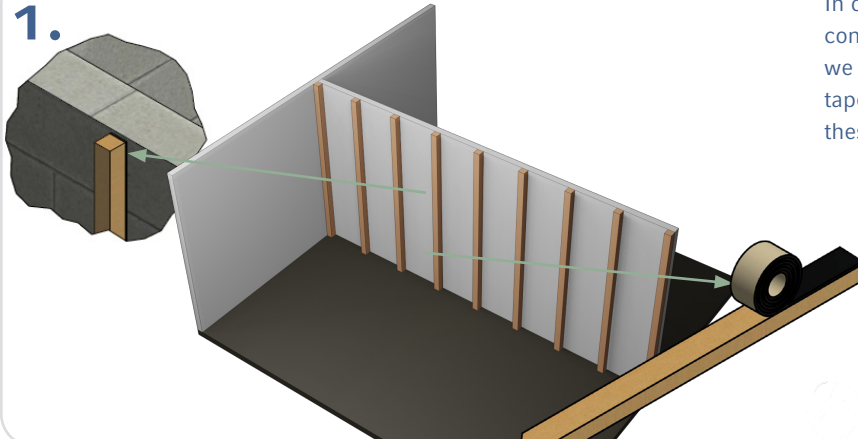


## HOW TO BUILD A CURTAIN WALL



TO THE INSTALLATION VIDEO

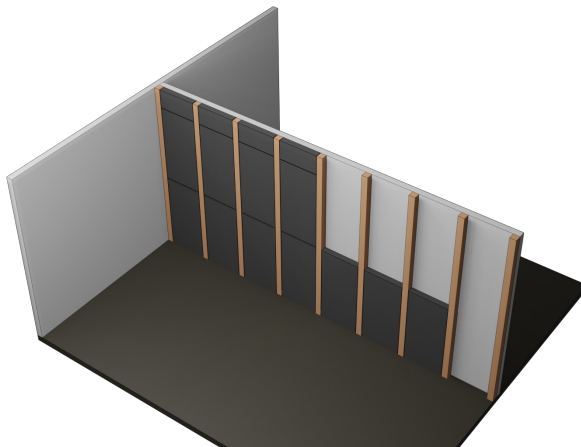
1.



In order to prevent a sound bridge due to direct contact between the wood slats and the wall, we recommend applying our soni NBR sealing tape to both sides of the slats and then fixing these to the wall using dowels and screws.



2.

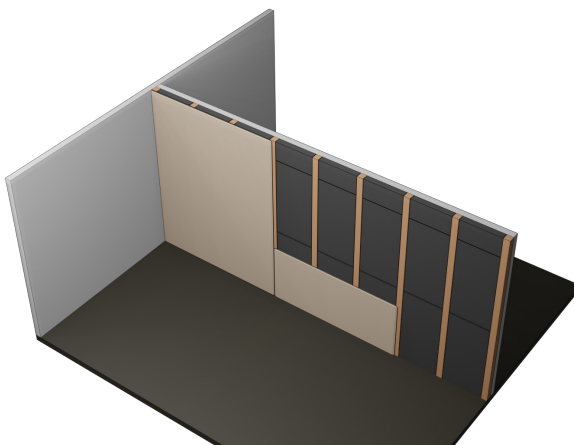


The empty spaces can then be filled with our soni composite or soni 491 STL noise protection panels.

Take off the film from the self-adhesive backing and press the panels onto the wall using even pressure.



3.



Screw the plasterboard or particleboard onto the slat framework .

Practical tip: For optimum overall effectiveness of the curtain wall, the wallboards can be decoupled from the side walls, the ceiling and the floor by filling the gaps with an acrylate compound.

